

U4123E





The lightning flash with arrowhead symbol, within an equilateral triangle, is intended to alert the user to “dangerous voltage” and to prevent from a risk of electric shock.

CAUTION
RISK OF ELECTRIC SHOCK
DO NOT OPEN

Warning:
 To reduce the risk of electric shock, don't open the cabinet. Refer servicing to qualified personnel only.



The exclamation point within an equilateral triangle is intended to alert the user to important operating and maintenance (servicing).

English

Please read the manual carefully before installing the receiver.

Caution: Never open the device by yourself. Dangerously high voltages are present inside the unit. Refer servicing to qualified staff only.

When installing the receiver, always unplug the receiver from the mains voltage.

Unplug the receiver from the mains in case of long periods without operating the receiver (for example, during holidays!).

To prevent shock hazard, do not touch the power plug with wet hands.

Always unplug the receiver before cleaning it or working on the connections.

Do not install the receiver close to strong heat sources, and ensure a good aeration if you plan to install the receiver in a small cabinet.

Before you start operating the receiver, make sure that the satellite antenna is properly built up, optimally connected and aligned.

The correct place to install the receiver is, of course, near your TV set and any other A/V signal sources (DVD, VCR, CD, game console, etc.).

Choose a stable support, in which you can easily lay the necessary connecting cables without stumbling-danger.

The receiver should be installed near an easily accessible outlet.

Do not install the receiver in a place where it can be reached by liquid spills.

Do not put any heavy objects as, for example, a TV-device over the receiver; the receiver could be damaged.

DO NOT INSTALL THE RECEIVER:

- On an unstable surface
- Subject to direct sunlight
- In high humidity environment
- Outside the receiver's temperature range (+5°...+40°C)

If the receiver is subject to severe temperature changes, it can suffer from water condensation inside. Switch off the receiver in these cases for at least 2 hours before resuming operation.

Follow next steps for the correct installation of this receiver.

STEP 1: CONNECTIONS

The coaxial cable, with satellite signal, must be connected to the "IF IN" connector. The "TV SCART" or "HDMI" connectors must be connected to the TV set.

The receiver also includes an UHF modulator, allowing connecting a TV set or VCR. However the picture quality will be a little poorer. The modulator has an antenna input and the output range is from channel 21 to 69. This will allow you to mix the existing antenna signals with the output channel generated by the receiver.

The modulator output is factory preset to channel 38. You can change the output channel in the TV system menu that you can find in System Setup menu.

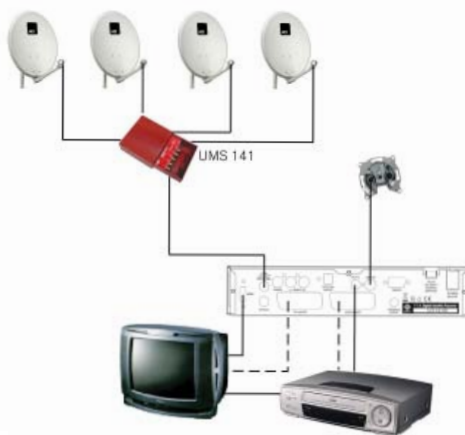
You will also have to tune your TV set accordingly, in order to receive the picture from the receiver.

Depending on the type of installation, the receiver should be connected and configured following next examples.

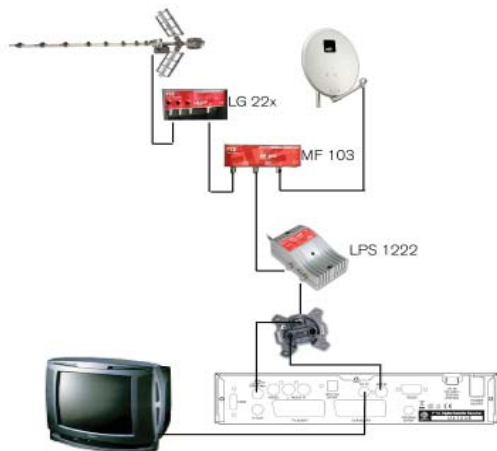
English



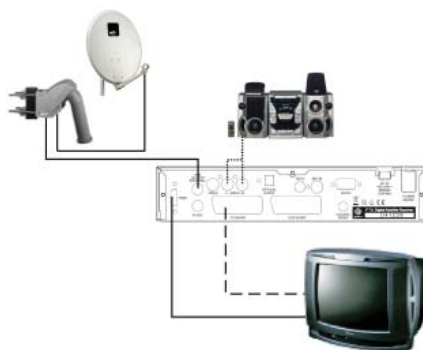
Example 1 - Basic System



Example 2 - DISEqC switches



Example 3 - Combined with terrestrial



Example 4 - Motorized system



IMAGE 1

STEP 2: BASIC CONFIGURATION OF THE RECEIVER

The receiver includes an installation assistant (Quick Setup) that will help you to setup the different parameters.

When the receiver is turned on at first time (using the button at the rear panel of the receiver), the next menu is shown on the TV (Image 1):

The receiver is programmed with all the channels of Astra (at position 1 of the DISEqC), Hotbird (at position 2 of the DISEqC), Hispasat (at position 3 of the DISEqC) and Turksat (at position 4 of the DISEqC). If your installation is different to this case, please follow installation steps to search the channels.

In order to move through the different options of this menu, please use the keys [◀▶] of your remote control. If a "Short circuit on the LNB" message is shown on the TV, please check the connections before continuing the installation.

Language. press [◀▶] to select languages. The selection of languages include: English, German, French, Spanish, Italian, Portuguese, Turkish, Polish, Russian, Danish, Greek, Hungarian, Arabic, Farsi.

First Audio. Some channels offer more than one audio language. This function allows you to set the preferred audio language for those channels using [◀▶]. If a channel offers the same audio language as the "First Audio" you set the system will play this audio language as default. If the channel does not offer this audio language then the system will compare the offered languages with the second audio language. The selections of audio languages include: English, German, French, Spanish, Italian, Portuguese, Turkish, Polish, Russian, Danish, Greek, Hungarian, Arabic, Farsi.

Second Audio. If the channel has no audio language that corresponds with "First Audio" but with "Second Audio" the system will play the second audio language as default. If no audio language corresponds with the "Second Audio" then the default language of the current channel will be played instead. The selections of audio languages include: English, German, French, Spanish, Italian, Portuguese, Turkish, Polish, Russian, Danish, Greek, Hungarian, Arabic, Farsi.

LNB Power. Here you can set the power output to the LNB. If your receiver is connected to the LNB directly then you need to set the LNB Power to "On". If your receiver is connected to a multi switch (SMATV signal distribution system) then it may be that you don't need to provide the power to the LNB. But since this is depending on the kind of installed distribution system we recommend you to contact your installer or to refer to the user



IMAGE 2

manual of this system to get the correct information.

Single search. You can edit the following items (Image 2):

1. Satellite: Press [Left/Right] to switch Satellites or press [OK] to enter satellite list to select directly.
2. LNB Configuration: Selecting this option and pressing [OK], the LNB Configuration menu will be displayed. In this menu, next options can be modified (Image 3):
 - LNB Type: Press [Left/Right] to switch among “Standard”, “User” and “Universal” mode. If you select “Standard” or “User”, the frequency of the LNB can be changed. Pressing [OK] the frequencies will appear to be edited. Select the frequency you want to edit and change the value with [Left/Right]
 - 22K: Use [Left/Right] to switch “ON” and “Off”. The 22 kHz signal is used in KU Universal LNBS to change between low band and high band. After choosing LNB type “Universal” you cannot modify 22K.
 - DiSEqC1.0: Use [Left/Right] to switch the options of DiSEqC switches.
 - DiSEqC1.1: Use [Left/Right] to switch the options of DiSEqC1.1 switches.
 - Positioner: Press [Left/Right] to select between “None / DiSEqC1.2 / USALS”.
 - Polarity: Press [Left/Right] to switch between “Auto / H / V”.
 - Toneburst: Press [Left/Right] to switch this function “On” or “Off”.

Once the LNB is configured, press [Exit] to save the changes and go to the previous window to continue configuring the antenna.

3. DiSEqC1.0: Use [Left/Right] to switch the options of DiSEqC switches.
4. On “TP Index” item use [Left/Right] to select the desired transponder.
5. In the “FTA Only” item, press [Left/Right] to select to scan only free channels or even scrambled channels. If you select “Yes” it will scan free channels only.
6. In “Scan Channel” item, press [Left/Right] to select to scan TV + Radio Channels, or just TV channels or just Radio channels.
7. In “Scan Mode” item you can select “Auto Scan” to blind scan or “Preset Scan” to scan all preset transponders.
8. Move the highlight to “Search” and press [OK] button to start scanning. Bars are showing the progress of the channel scanning in the lower part of the window and the found channels are listed.

You can stop the scan with [Exit] and save the so far found channels.

9. Press [Exit] to exit this menu. A window to confirm the changes will appear.

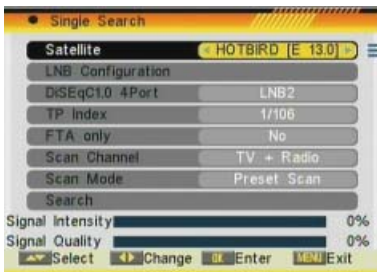


IMAGE 3



IMAGE 4

Multi search. You can edit the following items (Image 4):

1. On "Satellite" item press [OK] to open the satellite list. Then press [Left/Right] to move the highlight and press [OK] to mark/unmark and [EXIT] to finish the selection. You can select several satellites in this menu. At the bottom of the screen you can see the selected satellites. The system will use DiSEqC1.0/1.1, DiSEqC1.2 and USALS functions to search the marked satellites and scan channels.
2. On "FTA Only" item, press [Left/Right] to select scanning of all channels or just scanning of free channels. If you select "Yes" it will scan free channels only.
3. On "Scan Channel" item, press [Left/Right] to select the scanning range from TV + Radio Channels, only TV channels or only Radio channels.
4. On "Scan Mode" item, you can select "Auto Scan" to make a blind scan or "Preset Scan" to scan all preset transponders of the selected satellites.
5. Select "Search" and press [OK] to start scanning. In the lower part of the window the progress of scanning and the found channels are displayed.
6. Press [Exit] to cancel or finish the scanning and saving the found channels.

Main Menu: Selecting this option, the main menu will appear on the TV.

STEP 3: TIME CONFIGURATION

It is recommended to setup the clock before starting to enjoy the receiver, because correct time maybe is required by some applications. Please complete following options:

Press the [Menu] key of the remote control for appearing the main menu. Select the "System Setup" option and confirm pressing [OK].

Once in the "System Setup" option, please select "Local Time setting" option and press [OK]. Select "Time" option and press [OK]. Image 5 is watched on the TV. For setting up the time, please complete:



IMAGE 5

1. GMT Usage: this option will allow you to select if the date and time will be introduced manually (GMT Usage: Off) or if you wish to introduce the offset respect GMT manually (GMT Usage: On).
2. GMT Offset: If GMT Usage is On, the offset respect GMT has to be configured depending on your region or country. Use the [Left/Right] keys to choose the offset. Remember that the offset values are between -12:00 and +12:00
3. Summer: this option is only available when "USE GMT" is enabled. Use [Left/Right] to switch on/off the summer timetable.
4. Date / Time: In order to introduce manually the time and

date. Before these values can be modified, the automatic control of GMT has to be turned off.

NOTE: If the current channel provides the correct time information, you will see the current time after you entered "Time" menu. If the channel doesn't provide time information, you have to input the date and time information manually. The most channels support the time signal.

5. Show time: Use [◀▶] to switch on/off this option. When the option is enabled, the time will be displayed at the TV in a frame in the top right margin.

6. Press [Exit] to exit the menu.

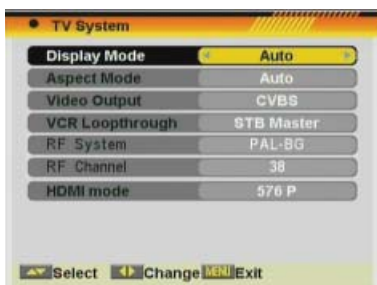



IMAGE 6

STEP 4: MODULATOR OUTPUT CHANNEL CONFIGURATION

It is recommended to setup the modulator output channel before starting to enjoy the receiver, especially if you are using this output for getting the picture on the TV and mixing it with an existing antenna signals.

The receiver includes an UHF modulator, allowing connecting a TV set or VCR without SCART connector. The modulator has an antenna input and the output range is from channel 21 to 69. This will allow you to mix the existing antenna signals with the output channel generated by the receiver. The modulator output is factory preset to channel 38. To change this value, please complete following options:

1. Press [Menu] button and access "System Setup" menu.
2. Select "TV System" menu and press [OK] (Image 6).
3. Select "RF Channel" option and change its value using [◀▶].
4. Press [Exit] button to save the changes and exit this menu. You will also have to tune your TV set accordingly, in order to receive the picture from the receiver.

 Channel

- TV Channel List: This option shows the list of TV stored channels.
- Radio Channel List: This option shows the list of Radio stored channels.
- Channel Setup: This option allows setting the receiver to start in a predefined channel.
- Favourite Channel List Name: It allows changing the name of the favourite groups.
- Delete All: This option deletes all TV and Radio stored channels.
- Restore channel list and settings: This option loads the user TV and Radio channel list, saved previously.
- Save channel list and settings: This option makes a backup of the channel list and it will allow restoring the channel list even though after a factory default.

 Installation

- Single Search: Once the antenna is configured, this option allows search for the channels of one satellite.
- Multi Search: Once the antenna is configured, this option allows search for the channels of various satellites.
- TP Search: Once the antenna is configured, this option allows search for the channels of one TP.
- Satellite List: This option shows all the stored satellites. This list can be modified.
- Satellite Guide: After introducing some data, this application allows to know which orientation and elevation should be the antenna.

System Setup

- Language: This option allows choosing the language of the menus.
- TV System: This option allows choosing the video Standard and other parameters of the screen.
- Time & Timer Setting: Timer setting menu.
- OSD Setting: This option allows configuring the subtitles of the channel information.
- Parental Lock: In this option, user can lock the access to the menu and change the password of the receiver.
- LNB Power: Turns on or off the LNB power.
- RCU position Switch: To chose the RCU position of the remote control.

Tools

- Information: Shows all the technical information for the selected channel.
- Quick Setup: The installation assistant will be loaded.
- Game: Some games like Tetris, Snake and Othello.
- Factory Default: This option resets the receiver and loads the factory default values.
- Software Upgrade: To update the receiver with other receiver, by USB or by satellite.
- SatcoDX Auto programming: To load SatcoDX channel lists.
- Smartcard: Information about conditional access system.

Media Management

- Media List: Allows to reproduce, to block and to delete recordings. Multimedia Player.
- Media Control: Allows to configure the hard disk options and to format it.
- Disk Information: You can see the capacity of the hard disk.
- Upgrade: To upgrade the receiver through the USB Port.

Safety Precaution

Caution.....13

1. Panel & Remote Control Description

1.1. Front Panel Description.....14
 1.2. Rear Panel Description.....14
 1.3. Remote Control Description.....15

2. Basic Operations

2.0. Switch on STB.....16
 2.1. Standby16
 2.2. TTX16
 2.3. Mute.....16
 2.4. Channel Number.....17
 2.5. Multi-Pictures.....17
 2.6. CH + / CH -.....17
 2.7. TV/RADIO.....17
 2.8. Vol+/Vol-.....17
 2.9. Exit.....17
 2.10. Menu-.....17
 2.11. Recall.....17
 2.12. Channel List.....17
 2.13. EPG.....18
 2.14. List.....19
 2.15. Favourites.....19
 2.16. Audio Track / Mode.....19
 2.17. Information.....19
 2.18. FAV +/-.....19
 2.19. ZOOM.....19
 2.20. Subtitles.....20
 2.21. LNB Short.....20
 2.22. Code.....20
 2.23. REC.....20
 2.24. PVR.....21
 2.25. Time Shift.....21
 2.26. Forward / Reward21
 2.27. GoTo.....22

3. Channel

3.1. TV Channel List.....23
 3.1.1. Favourite.....23
 3.1.2. Move.....24
 3.1.3. Sort.....24
 3.1.4. Edit.....24

- 3.1.4.1 Delete.....24
- 3.1.4.2 Skip.....24
- 3.1.4.3 Lock.....25
- 3.1.4.4 Edit.....25
- 3.1.5. Find.....25
- 3.2. Radio Channel List.....26
- 3.3 Channel Setup.....26
 - 3.3.1. Start-up Channel.....26
 - 3.3.2. Channel Play Type.....26
- 3.4. Favourite Channel List Name.....26
- 3.5. Delete All.....27
- 3.6. Restore channel list and settings.....27
- 3.7. Save channel list and settings.....27

4. Installation

- 4.1. Single Search.....28
- 4.2. Multi Search.....29
- 4.3. TP Scan.....30
- 4.4. Satellite List.....31
- 4.5. Satellite Guide.....31

5. System Setup

- 5.1. Language.....32
- 5.2. TV System.....33
- 5.3. Time & Timer Setting33
 - 5.3.1. Timer.....33
 - 5.3.2. Local Time setting.....35
 - 5.3.3. Sleep Timer.....36
- 5.4. OSD Setting.....36
- 5.5. Parental Lock.....36
- 5.6. LNB Power.....37
- 5.7. RCU Position Switch.....37

6. Tools

- 6.1. Information.....38
- 6.2. Quick Setup.....38
- 6.3. Game.....39
 - 6.3.1. Tetris.....39
 - 6.3.2. Snake.....39
 - 6.3.3. Othello.....39
- 6.4. Factory Default.....39
- 6.5. Software Update.....40
 - 6.5.1. RS232 Upgrade.....40
 - 6.5.2. Upgrade by Satellite.....40

6.5.3. Upgrade by USB.....40

6.6. SatcoDX Auto Programming.....41

6.7. Smartcard.....41

7. DVR Management

7.1. Media management.....42

 7.1.1. Recording management.....43

 7.1.1.1. How to reproduce a recording.....43

 7.1.1.2. How to rename a recording.....43

 7.1.1.3. How to block a recording.....43

 7.1.1.4. How to delete a recording.....43

 7.1.1.5. How to delete all recordings.....44

 7.1.2. Multimedia player.....44

 7.1.2.1. Edit files and folders.....44

 7.1.2.2. Addind a new file to the list.....45

 7.1.2.3. Search for file.....46

 7.1.2.4. Logo.....46

 7.1.2.5. Configure the slide show.....46

 7.1.2.6. Audio .MP3 player.....46

 7.1.2.7. Picture .JPG viewer.....47

 7.1.2.8. Video .MPG player.....47

7.2. HDD Control.....47

 7.2.1. TMS Reserved Size.....47

 7.2.2. Jump Step Value.....47

 7.2.3. Record Type.....47

 7.2.4. Test Disk Speed.....47

 7.2.5. Record path.....48

 7.2.6. Format HDD.....48

7.3. HDD Information.....48

7.4. Upgrading through USB.....48

8. Technical Specification.....49

9. Conformity declaration.....50



The lightning flash with arrowhead symbol, within an equilateral triangle, is intended to alert the user to “dangerous voltage” and to prevent from a risk of electric shock.

CAUTION
RISK OF ELECTRIC SHOCK
DO NOT OPEN

Warning:
 To reduce the risk of electric shock, don't open the cabinet. Refer servicing to qualified personnel only.



The exclamation point within an equilateral triangle is intended to alert the user to important operating and maintenance (servicing).

Please read the manual carefully before installing the receiver.

Caution: Never open the device by yourself. Dangerously high voltages are present inside the unit. Refer servicing to qualified staff only.

When installing the receiver, always unplug the receiver from the mains voltage.

Unplug the receiver from the mains in case of long periods without operating the receiver (for example, during holidays!).

To prevent shock hazard, do not touch the power plug with wet hands.

Always unplug the receiver before cleaning it or working on the connections.

Do not install the receiver close to strong heat sources, and ensure a good aeration if you plan to install the receiver in a small cabinet.

Before you start operating the receiver, make sure that the satellite antenna is properly built up, optimally connected and aligned.

The correct place to install the receiver is, of course, near your TV set and any other A/V signal sources (DVD, VCR, CD, game console, etc.).

Choose a stable support, in which you can easily lay the necessary connecting cables without stumbling-danger.

The receiver should be installed near an easily accessible outlet.

Do not install the receiver in a place where it can be reached by liquid spills.

Do not put any heavy objects as, for example, a TV-device over the receiver; the receiver could be damaged.

DO NOT INSTALL THE RECEIVER:

- On an unstable surface
- Subject to direct sunlight
- In high humidity environment
- Outside the receiver's temperature range (+5°...+40°C)

If the receiver is subject to severe temperature changes, it can suffer from water condensation inside. Switch off the receiver in these cases for at least 2 hours before resuming operation.

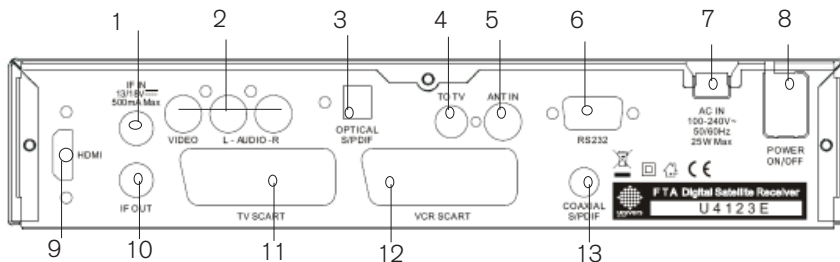
1. PANEL & REMOTE CONTROL DESCRIPTION

1.1. FRONT PANEL DESCRIPTION



1. POWER: Switches the receiver on, or enters standby mode. To completely switch off the receiver, you have to use the switch on the back of the receiver.
2. LOCK LED: Indicates a sufficient signal level at the IF IN input.
3. POWER LED: Indicates that the mains voltage (90-230 VAC) is available.
4. DISPLAY: 4 Digits to display the program numbers.
5. IR-SENSOR: Reception sensor for the IR remote control signals.
6. CH+/-: These buttons allow changing the current channel.
7. Conditional Access: FELEC-CAS
8. USB: Connector for external USB 2.0 HighSpeed devices.

1.2. REAR PANEL DESCRIPTION



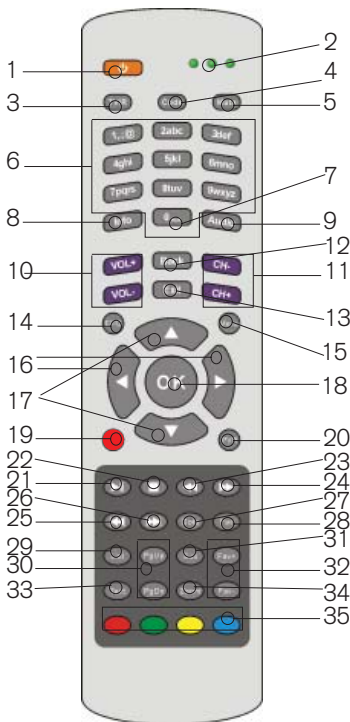
1. IF IN: Satellite input.
2. VIDEO / AUDIO: HiFi Outputs for stereo set or monitor
3. OPTICAL S/PDIF: Optical output for digital audio (AC3).
4. TO TV: Modulator output for the connection to a TV set.
5. ANT IN: Antenna input for the terrestrial antenna.
6. RS-232: Serial Port allowing software upgrades.
7. AC IN: Mains input cable.
8. POWER ON/OFF: Allows to completely switching off the receiver.
9. HDMI: HDMI Output

Note: If you have the HDMI output connected and you select the progressive mode, the SCART output is automatically disabled.

10. IF OUT: Satellite output for cascading to other devices.

Note: The operation of another receiver at the same time is only possible with limited channel selection.

11. TV SCART: Output SCART for the connection to a TV set.
12. VCR SCART: Output SCART for the connection to a VCR set.
13. COAXIAL S/PDIF: Coaxial output for digital audio (AC3).



- 1.- POWER: Switches receiver ON or in stand-by-mode.
- 2.- LEDs: Shines as function control, showing the selected transmission code 1, 2 or 3.
- 3.- TV/R: Switches between TV and Radio channels.
- 4.- CODE: Changes transmission code of the remote control.
- 5.- MUTE: Switches audio on and off.
- 6.- NUMERIC KEYS: For direct typing values and names.
- 7.- "0"
- 8.- INFO: Shows channel information with signal bar.
- 9.-Audio: Opens audio menu.
- 10.- VOL+ / VOL-: Adjusts audio volume up and down.
- 11.- CH+ / CH-: Changes channel up and down.
- 12.- Back: To toggle between the actual and the last selected channel.
- 13.- EXIT: Exit menus or stop operations.
- 14.- EPG: Shows the EPG information.
- 15.- MENU: Opens the main menu.
- 16.- : Adjusts audio volume or controls the cursor in menus.
- 17.- : Changes channels volume or controls the cursor in menus.
- 18.- OK: Confirms selections or opens channel list.
- 19.- REC: Quick start for recording.
- 20.- PVR: Opens PVR menu.
- 21.- : Start / Stop button for recording and TimeShift.
- 22.- : Stop button for recording and TimeShift.
- 23.- : Backward button for recording and TimeShift.
- 24.- : Forward button for recording and TimeShift.
- 25.- : Back.
- 26.- : Next.
- 27.- GoTo: To move to the specified position.
- 28.- Fav: Opens favourite channel list.
- 29.- List: Opens channel list.
- 30.- Pup / Pdw: Moves cursor in block steps.
- 31.- Sub: Switches subtitle on and off.
- 32.- Fav+ / Fav-: Moves favourite channel up and down.
- 33.- TEXT: Opens and closes teletext.
- 34.- Zoom: Zoom function.
- 35.- Color keys: Controls menu options.

2. BASIC OPERATIONS

2.0. SWITCH ON STB

Switch the [Device's Main Power] switch on.

When the STB is first used it will display the quick setup page where the receiver can be configured quickly.

For further use the STB will play the same channel as last time when it was switched off.



OSD 1

? FREQUENTLY ASKED QUESTION

Q: The power of my STB is on and it is running in TV mode but the TV screen shows nothing:

A: Make sure the TV set has been set to the correct video input (not the TV channels). For example, if you have connected the STB to the Video1 input of the TV set, then you need to select the corresponding Input on the TV. Mostly it is done with the AV button of the TV's remote control unit.

Q: My STB is running in TV mode but the TV screen shows nothing except one ball and "No Signal".

A: That means the channel you selected has no signal. This can be caused by several reasons:

- 1. The channel you selected is not from the satellite to which your dish is pointing. Select another channel.*
- 2. The signal of current TV channel is too weak. You can try to change to other channels with a stronger signal. If the problems still exist, please consult your local dealer or installer for technical service.*
- 3. You selected the wrong LNB type in the installation menu or your DiSEqC switch configuration is not correct.*



OSD 2

2.1. STANDBY

1. Press [Power] button to switch from TV mode to Standby mode.
2. In Standby mode press [Power] button again to switch back to TV mode. The last active channel will be showed.
3. To switch off the STB complete press the main power button (placed at the rear panel of the receiver).

2.2. TTX

1. Press [TXT] button in TV mode to open the teletext page (OSD 1). This service is depending on the support of the channel provider.
2. If the channel does not support teletext information, it will show "No Teletext Data" on the screen.



OSD 3

2.3. MUTE

1. Press the [Mute] button to mute the sound. On the screen an icon will be displayed to indicate the muted sound (OSD 2).



OSD 4

2. Press the [Mute] button again to restore the sound.

2.4. CHANNEL NUMBER

In TV mode you can enter the channel number directly with your remote control unit and confirm the number with the OK button to change to the desired channel.

2.5. MULTI-PICTURES

In TV mode, press [0] button to enter the Multi-Picture mode (OSD 3).

1. In Multi-Picture mode the screen will display 9 channels' preview window (static), starting from the current channel. Only the marked preview program is continuously playing.
2. Press [] to change the marked channel among the preview programs.
3. With the number buttons [1] ~ [9] you can directly move the highlight to the related channel.
4. With [OK] you return to full screen mode in the marked channel.



OSD 5

2.6. CH +/ CH -

In TV mode press [CH+ / CH-] to change channel.

2.7. TV/RADIO

In TV mode, press [TV/R] to switch to Radio mode. In Radio mode press [TV/R] again to switch back to TV mode.

2.8. VOL+ / VOL-

In TV mode, press [Vol+ / Vol-] to adjust volume.

2.9. EXIT

Press [Exit] button to exit the current menu.

2.10. MENU

Press [Menu] button to enter or exit the current menu.

2.11. RECALL

Pressing the [Back] button allows you to toggle between the actual and the last selected channel.



OSD 6

2.12. CHANNEL LIST

In TV mode press [OK] button to open the Channel List window.



OSD 7

Reduced Channel List (OSD 4):

You can use [Left Arrow, Right Arrow, Left Arrow, Right Arrow] keys to navigate this list.

1. Press [Yellow] button to open the SAT list. After selecting a satellite the channel list will be reduced to the channels of this satellite.
2. Press [Blue] button to open the "Find" window. You can use this feature to find channel by their names.
3. Press [Red] button to open the expanded channel list.
4. Once the desired channel is selected, press [OK] to change and display the marked channel.

Expanded Channel List (OSD 5):

You can use [Left Arrow, Right Arrow, Left Arrow, Right Arrow] keys to navigate this list.

In this view, you can get more information about the frequency, polarity, symbol rate and PID of the selected channel.

1. Press [Green] button to sort the channels by free and scrambled channels. Free channel are listed first and scrambled channels last.
2. Press [Yellow] button to open the SAT list. After selecting a satellite the channel list will be reduced to the channels of this satellite.
3. Press [FAV] button to open FAV list. After selecting a Favourite Group the channel list will be reduced to the channels of this group.
4. Press [Blue] button to open the "Find" window (OSD 6). You can use this feature to find channel by their names.



OSD 8

5. Press [Red] button to open the reduced channel list.
6. Once the desired channel is selected, press [OK] to change and display the marked channel.



OSD 9

2.13. EPG

1. The STB supports Electronic Program Guides (EPG) to give you information about the actual programs of certain channels like event name, subtitle, description, start and finish time. This feature is depending on the service of the channel provider. Press [EPG] to open the EPG window (OSD 7).

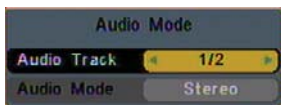
2. The [Red] button opens the detailed schedule of the marked channel (OSD 8). You can select an event with [Left Arrow, Right Arrow] and display the event's detailed description with [OK]. With the [Yellow] button you can program a timer with the start and finish time and date of this event.

3. Press the [Green] button in the EPG menu to display the detailed information of the actual event in the selected channel (OSD 9). With the [Red] button you can get more information about the events of the channel. With the [Yellow] button you can program a timer with the start and finish time and date of this event.

4. To close the EPG menu press [Exit].



OSD 10



OSD 11



OSD 12

2.14. LIST

In TV mode, press [List] button to access directly to the “TV Channel List” menu or to the “Radio Channel List” menu.

2.15. FAVOURITES

1. In TV mode press the [Favourite] button to display the Favourite Group window on the screen as the picture beside shows (OSD 10).
2. In the Favourite Group window you can select the desired favourite channel with [Left/Right] and confirm it with [OK] to switch to it. In bigger groups you can navigate with [Up/Down].
3. With [Left/Right] you can select different Favourite Group.
4. Press [Exit] to close the Favourite Group window.

? FREQUENTLY ASKED QUESTION

Q: Why the screen displays “No Favourite Channel” after pressing the [Favourite] button?

A: No channels have been assigned to a Favourite Group yet. You can do this in the channel menu.

2.16. AUDIO TRACK / MODE

1. In TV mode, press the [Audio] button to open the Audio Mode window (OSD 11).
2. Select the item you want to adjust with [Left/Right] and change the value with [Up/Down].
3. Press [Exit] to leave this window.

2.17. INFORMATION

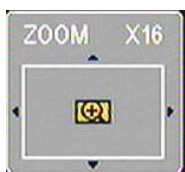
In TV mode, press [INFO] button can open information screen (OSD 12), in the window shows the parameters of current channel.

2.18. FAV +/-

1. In TV mode press the [FAV+]/[FAV-] buttons to switch between the favourites channels in the current Favourite Group directly.
2. The sequence of the favourite channels is following the sequence in the related Favourite Group list.

2.19. ZOOM

1. Press [Zoom] button in TV mode to zoom the image. Image can be augmented x16 times (OSD 13).
2. Press [Exit] to exit this function.



OSD 13



OSD 14

2.20. SUBTITLES

In TV mode, press [Sub] button for activating / deactivating the channel subtitles, depending on the provider information.

2.21. LNB SHORT

When LNB is short, it will notify user on screen "LNB Short!" (OSD 14). Please check your cables and connections for shorts. When the short is removed the warning message will disappear.

2.22 CODE

It shows and changes the selected code on the remote control. This code has to correspond with the one selected on the receiver's menu. (Chapter 5.7)

2.23. REC

To start the recording (OSD 15).

If you would like to record a programme immediately, press the Key REC. A new window will appear on the screen, where you can select the length of the recording (from 15 to 180 minutes in a range of 15 minutes interval).

The rest of the data that appear in this window inform you about the recording channel, the date, the time and the free space on the hard disk. Once the minutes length is settled, confirm again by pressing the REC key and it will start to record.

Press [Exit] to cancel the recording.

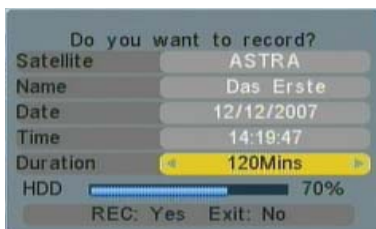
Note: If the hard disk is full, a warning message will be shown on the screen. Please, delete some files in order to be able to record again (chapter 7.1.1.4).

Note: If during the recording, the hard disk fills up, the recording stops and will only store the data recorded until that moment (without losing the previously stored data).

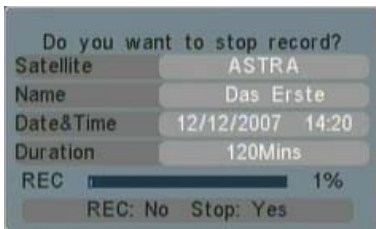
In case you execute a fast recording and fixing the duration, this will get in conflict with a timer, an alert message will be shown in the screen.

This message informs with the first timer that would be in conflict in the fast recording, and it requests the confirmation that you want to do in the moment of the timer.

- If you push again "Rec": it will keep the event programmed. The receiver will carry out the fast recording until the moment of the programmed event, when it will do it, obviating the selected duration in the fast recording.



OSD 15



OSD 16

- If you push "Exit": it will make the fast recording and will obviate the temporised events that will get in conflict. Anyway, in the moment of the temporised event the user are inquired again about if he wants to carry out the programmed event. In case of no response, it will continue with the fast recording. In order to stop a recording before the ending of the programmed length, press the [Stop]-Key. A new window will be shown in order to confirm the end of the recording (OSD 16). If you press the Key [Rec], the recording will continue. Press the key [Stop] again to end the recording manually, if you want to end the recording before the programmed length.

2.24. PVR

It opens directly the recording administration menu (Chapter 7.1).



OSD 17

2.25. TIME SHIFT

If you are watching a program and you want to stop it and later continue watching it, press the key [▶||] on the remote control. The program will stop and will be stored on the hard disk of your receiver. The OSD will show you the time since the function is activated (OSD 17).

When you wish to continue watching the program, press the button [▶||] again. If the information is on the hard disk, it is possible to fast forward and reward. Pressing the button [◀] or [▶] several times, you can settle the speed of forward. Options: 2x, 4x y 8x.

You can also use the keys [◀] or [▶] in order to go forward/reward.

Using the key [Info] you can see the time difference between your reproduction and the real time.

In order to leave the Time Shift option, press the key [stop] to equal the difference between the reproduction time with the real one. When you press [Stop] again, it will appear a window to ask for the confirmation to finish the Time Shift (OSD 18). If you press the key [Rec], it will continue in Time Shift mode. Press the key [Stop] again to leave the Time Shift settings.



OSD 18

2.26. FORWARD / REWARD

On a current reproduction, press the keys [◀] or [▶] to go forward or reward in a period of the reproduction.

This period is configurable using the receiver menu and they can be of: 1, 3, 5, 10 and 15 minutes (chapter 7.2.2).

If it is configured in every 10 minutes, each time that you press this key, it will jump automatically 10 minutes forward/reward of the reproduction.

 Jump

/00:54:34

OSD 19

2.27. GOTO

On a current reproduction, press the key [GoTo] to go to a certain point of the reproduction.

When you press this key, a window appears where you can introduce, using the numbers on the remote control, the hour: minute: second you want to go to (OSD 19).

If the introduced value is higher to the reproduction limit, an error window will be shown.

3. CHANNEL



OSD 20

Press [Menu] in the TV mode to enter the main menu (OSD 20).

1. Press [Left/Right] to select the Channel item.
2. Press [OK] to enter the selected item.

In the Channel menu (OSD 21):

3. Press [Left/Right] to select the wanted menu item.
4. Press [OK] to enter the selected item among.
 - TV Channel List
 - Radio Channel List
 - Channel setup
 - Favourite channel list name
 - Delete All
 - Restore channel list and settings
 - Save channel list and settings



OSD 21

3.1. TV CHANNEL LIST

If you enter the Channel List menu a window like the one besides will open (OSD 22).

1. You can move the highlighted channel with [Left/Right] and press [OK] to preview the highlighted program in the preview window.
2. You can enter directly the number of the desired channel with the remote control. The selection will select that channel, but it will not be previewed until you confirm with [OK] button.
3. Press [Pup/Pdw] on the RCU to jump between the channels by pages.
4. Press [Left/Right] to switch the Program Group.
5. Press [Menu], [Exit] or [Ok] buttons to enter TV mode playing mode.
6. The colour buttons offer further functions to manage the channel list.



OSD 22

3.1.1. FAVOURITE

1. Press [FAV] to open the Favourite window (OSD 23).
2. You can select between 8 favourites groups with [Left/Right]. Press [OK] to assign the channel to a Favourite group.
3. Press [OK] again to remove the channel from the marked favourite group.
4. Press [Exit] button to return to the TV Channel List. The channels of Favourites Groups are indicated with a favourite icon behind the name.



OSD 23



OSD 24

3.1.2. MOVE

1. To move/change channels: Pushing the [Red] button, you will see a picture like OSD 24. You will be able to move or change the position of the channels:

- Push again the [Red] button to move the channel.
- Push the [Green] button to change the position of the channel.

2. Move the channel to the desired position with [Left/Right]. Press [OK] to confirm the position.

3.1.3. SORT

1. Press [Green] to open the Sort window (OSD 25). Press [Left/Right] to select and [OK] to confirm your choice.

2. The ways of sorting are:

- Name (A-Z): Sorting in Alphabetical Order, ignoring "\$" symbol.

- Name (Z-A): Sorting in Alphabetical Order, ignoring "\$" symbol.

- FTA: Sort channel by free and scrambled sequence. Free channels will be listed first and scrambled channels behind in the channel list.

- Lock: Unlocked channels are listed first and locked channels at the end.

- Default: Load the default sort of channels.

3.1.4. EDIT

1. After pressing the [Yellow] button a window for entering the password will open. The default password is "0000".

2. You can Delete, Skip, Lock and Edit the channel (OSD 26).

3. Press [Exit] to leave the Channel Editing. The system will ask you to confirm the saving of the changes you made.



OSD 25



OSD 26

3.1.4.1 DELETE

In Channel Edit menu press [Red] button to mark a channel for deleting.

A confirmation of deleting one or all channels from the list is displayed (OSD 27):

- Please, confirm pushing the [Red] button to select the channels one by one. Only the selected channels will be deleted.

- Confirm pushing the [green] button to select all the channels from the list.

Marked channels (OSD 28) will be deleted after you confirm to save the changes when you leave this menu.



OSD 27



OSD 28



OSD 29

3.1.4.2 SKIP

In Channel Edit menu, press [Green] button to place a Skip icon behind the name of the highlighted channel. Marked channels (OSD 29) will be skipped when you change channels in TV

mode after you confirm to save the changes when you leave this menu.



OSD 30

3.1.4.3 LOCK

In Channel Edit menu, press [Yellow] button to place a Lock icon behind the name of the highlighted channel. Marked channels (OSD 30) will be locked and displayed only after password has been entered if you confirm to save the changes when you leave this menu.



OSD 31

3.1.4.4 EDIT

Pressing the [Blue] button in the TV Channel List Edit menu will open another window where you can choose between Edit the actual channel or create a new channel (OSD 31).

1. Edit current channel: To edit the channel press the [Red] button (OSD 32).

- Name: You can edit the name of the current channel using the keys on the remote control.
- On the "Video PID", "Audio PID" and "PCR PID" items you can input numbers to modify the item's value.
- After modification select "Save" and press [OK] button to save the modified values and exit "Edit" mode. Or select "Exit" and press [OK] to leave Edit mode without saving the modifications.



OSD 32

2. Create: Press [Green] button to open the Create window (OSD 33).

- Press [OK] button on the "Satellite" item to display the satellite list. You can select the satellite for which you want to create a new channel.
- With marked "TP Index" item press [Left/Right] to select the TP number where the channel can be found. The next three items will show the related parameters.
- Highlight the "Name" item and edit the name of the current channel using the keys on the remote control.
- In "Video PID", "Audio PID" and "PCR PID" items you can enter the numbers directly to set these parameters of the new channel.
- After modification select "Save" and press [OK] to save the new channel and leave the Edit mode. Select "Exit" and press [OK] to exit the Edit mode without saving the new channel.



OSD 33

3.1.5. FIND

1. Press [Blue] button to open the "Find" window like showed besides (OSD 34). Press [Left/Right] to select the leading character of the channel name and press [OK] to confirm it.

2. After entering the character(s) highlight "OK" in the window and press [OK] on the RCU.



OSD 34



OSD 35

3. Press [Exit] button to close the Find window and brings you back to the channel list.

3.2. RADIO CHANNEL LIST

Basically the operation of "Radio Channel List" is same as "TV Channel List" (OSD 35).

3.3. CHANNEL SETUP

When you enter the "Channel Setup" menu you will see a screen like beside (OSD 36):



OSD 36

3.3.1. START-UP CHANNEL

Press [OK] to enter "Start-up Channel" menu to see the screen like showed beside (OSD 37):



OSD 37

1. If you set of "Boot on Channel" to "On" you can edit the following two items. If the setting is "Off" the box always starts with the channel that was running when the box has been switched off.

2. On the "Mode" item you can select either "TV channel" or "Radio channel".

3. On "Start-up Channel" item you can open the channel list by pressing [OK]. Then you can select the channel of you choice. Press [OK] again to confirm.

3.3.2. CHANNEL PLAY TYPE

Press [OK] to enter "Channel Play Type" menu (OSD 38).

1. Here you can select the "playing channels" as "Free", "Scrambled" or "All".

2. If you select "Free" then all scrambled channels will be skipped when you change channels with [CH+/-].

3. Press [Exit] to leave the "Channel Setup" menu.



OSD 38

3.4. FAVOURITE CHANNEL LIST NAME

In this menu, user is able to change the name of the Favourite Groups. Press [OK] to enter this menu and you will see a screen like beside (OSD 39).

To change the name of the Favourites Groups:

1. Press [Left/Right] and select a Favorite Group.

2. Press [Ok] button to edit the name of the Group.

3. Once the name is correct, select "Ok" option and confirm pressing [OK] (OSD 40 next page).

4. If the name is used by other group, an alert message will appear on the TV.

5. Select "Exit" and press [OK] to leave this menu.



OSD 39



OSD 40

3.5. DELETE ALL

To delete all channels:

1. Enter the password. The default password is "0000".
2. After entering the password correct a safety question will show up where you have to confirm first (OSD 41).
3. Select "Yes" to delete all channels or "No" to cancel and confirm with [OK].
4. In step 2 and step 3, pressing [Exit] will exit the function directly without saving.



OSD 41

? FREQUENTLY ASKED QUESTION

Q: If I incautiously delete all channels, what should I do?

A: There are three ways to restore:

- To re-search all channels at the "Installation" menu.
- Use "Factory Default" function to restore all channels in the "Tools" menu. The receiver will load the factory channels.
- Use the "Restore channel list and settings" option as next point shows.

3.6. RESTORE CHANNEL LIST AND SETTINGS

Using this option, the receiver will load the channels saved as previously as a backup of the user channels list (see point 3.7.). For restoring the default channels, please:

1. Enter the password. The default password is "0000".
2. After entering the password correct a safety question will show up where you have to confirm first (OSD 42).
3. Select "Yes" to delete all channels or "No" to cancel and confirm with [OK].
4. In step 2 and step 3, pressing [Exit] will exit the function directly without saving.



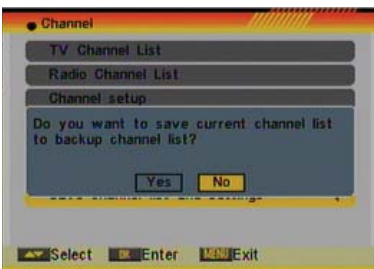
OSD 42

3.7. SAVE CHANNEL LIST AND SETTINGS

This option is very important, because here is where the security of your data lies. This option makes a backup of the channel list and it will allow restoring the channel list even though after a factory default.

Once you have customized your receiver and everything operates properly, you have the possibility, with this option, to save the programs' data.

1. Enter the password. The default password is "0000".
2. After entering the password correct a safety question will show up where you have to confirm first (OSD 43).
3. Select "Yes" to delete all channels or "No" to cancel and confirm with [OK].
4. In step 2 and step 3, pressing [Exit] will exit the function directly without saving.

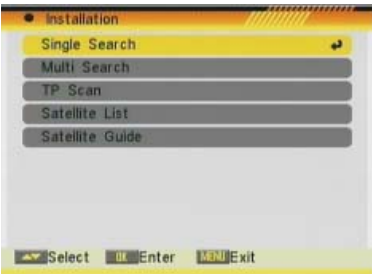


OSD 43

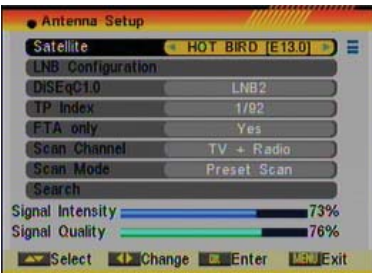
4. INSTALLATION



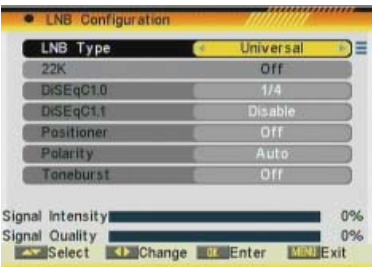
OSD 44



OSD 45



OSD 46



OSD 47

Press [Menu] in the TV mode to enter the main menu (OSD 44).

1. Press [Left/Right] to select the Installation item.
2. Press [OK] to enter the selected item.

In the Installation menu (OSD 45):

3. Press [Left/Right] to select the wanted menu item.
4. Press [OK] to enter the selected item among.
 - Single Search
 - Multi Search
 - TP Scan
 - Satellite List
 - Satellite Guide

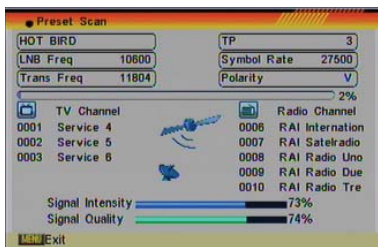
4.1. SINGLE SEARCH

After selecting Antenna Setup another window will be opened (OSD 46).

You can edit the following items:

1. Satellite: Press [Left/Right] to switch Satellites or press [OK] to enter satellite list to select directly.
2. LNB Configuration: Selecting this option and pressing [OK], the LNB Configuration menu will be displayed (OSD 41). In this menu, next options can be modified:
 - LNB Type: Press [Left/Right] to switch among “Standard”, “User” and “Universal” mode. If you select “Standard” or “User”, the frequency of the LNB can be changed. Pressing [OK] the frequencies will appear to be edited. Select the frequency you want to edit and change the value with [Left/Right].
 - 22K: Use [Left/Right] to switch “ON” and “Off”. The 22 kHz signal is used in KU Universal LNBs to change between low band and high band. After choosing LNB type “Universal” you cannot modify 22K.
 - DiSEqC1.0: Use [Left/Right] to switch the options of DiSEqC switches.
 - DiSEqC1.1: Use [Left/Right] to switch the options of DiSEqC1.1 switches.
 - Positioner: Press [Left/Right] to select between “None / DiSEqC1.2 / USALS”.
 - Polarity: Press [Left/Right] to switch between “Auto / H / V”. Once the LNB is configured, press [Exit] to save the changes and go to the previous window to continue configuring the antenna.
 - Toneburst: Press [Left/Right] to switch this function “On” or “Off”.

English



OSD 48

3. DiSEqC1.0: Use [◀ ▶] to switch the options of DiSEqC switches.
4. On "TP Index" item use [◀ ▶] to select the desired transponder.
5. In the "FTA Only" item, press [◀ ▶] to select to scan only free channels or even scrambled channels. If you select "Yes" it will scan free channels only.
6. In "Scan Channel" item, press [◀ ▶] to select to scan TV + Radio Channels, or just TV channels or just Radio channels.
7. In "Scan Mode" item you can select "Auto Scan" to blind scan or "Preset Scan" to scan all preset transponders.
8. Move the highlight to "Search" and press [OK] button to start scanning. Bars are showing the progress of the channel scanning in the lower part of the window and the found channels are listed (OSD 48).

You can stop the scan with [Exit] and save the so far found channels.

9. Press [Exit] to exit this menu. A window to confirm the changes will appear.



OSD 49

4.2. MULTI SEARCH

When you enter the "Multi Search" menu a window like the one beside will open (OSD 49).

1. On "Satellite" item press [OK] to open the satellite list (OSD 50). Then press [◀ ▶] to move the highlight and press [OK] to mark/unmark and [EXIT] to finish the selection. You can select several satellites in this menu. At the bottom of the screen you can see the selected satellites (OSD 51). The system will use DiSEqC1.0/1.1, DiSEqC1.2 and USALS functions to search the marked satellites and scan channels.



OSD 50

2. On "FTA Only" item, press [◀ ▶] to select scanning of all channels or just scanning of free channels. If you select "Yes" it will scan free channels only.

3. On "Scan Channel" item, press [◀ ▶] to select the scanning range from TV + Radio Channels, only TV channels or only Radio channels.

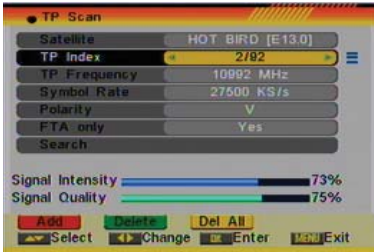
4. On "Scan Mode" item, you can select "Auto Scan" to make a blind scan or "Preset Scan" to scan all preset transponders of the selected satellites.

5. Select "Search" and press [OK] to start scanning. In the lower part of the window the progress of scanning and the found channels are displayed.

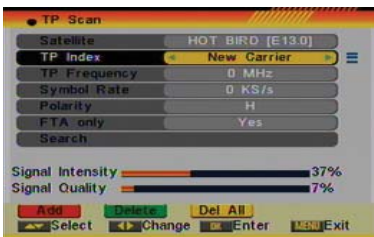
6. Press [Exit] to cancel or finish the scanning and saving the found channels.



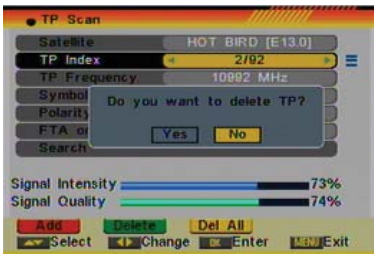
OSD 51



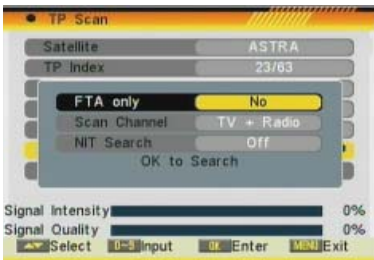
OSD 52



OSD 53



OSD 54



OSD 55

4.3. TP SCAN

When you enter "TP Scan" menu a window like the one beside will be displayed (OSD 52):

1. On "Satellite" item, press [Left/Right] to select the satellite you want to scan or press [OK] to open the satellite list for selection.

2. On "TP Index" item use [Left/Right] to select the desired transponder.

If any of the TP of the list have tuned and stored channels into the receiver, the following two options "Frequency" and "Symbol Rate" will not be able to be edited.

It means that the parameters cannot be modified by error neither losing the stored channels when any value of the data base is changed.

In case of any value, for example the Symbol Rate of a TP, has been modified by the provider and the receiver has these channels tuned, the TP must be deleted (it will delete all the channels of this TP), create it again with the correct data, and to carry out a new search of the TP.

In this item you can also add, delete or delete all TP.

- Press [Red] button to add a new TP (OSD 53). You have to set the parameters of "TP Frequency" and "Symbol Rate" for this new transponder. Therefore use the number buttons of the RCU. The available range are "3000~13450 MHz" and "1000~45000KS/s".

- Press [Green] button to delete the current TP. A safety question will be displayed for confirmation to delete the current transponder or not (OSD 54). If you select "Yes", the current transponder will be deleted and the total number of transponders will be reduced.

- Press [Yellow] button to delete all TP. A safety question will be displayed for confirmation to delete all transponders or not. If you select "Yes", all transponders will be deleted.

3. For transponders you also can use number buttons to modify the parameters of "TP Frequency" and "Symbol Rate" or [Left/Right] to change the value directly. "Polarity" and "Scan Mode" are used for setting scans conditions. Press [Left/Right] to select a different mode.

4. Polarity: Press [Left/Right] to switch between "Auto / H / V".

5. Search channels of the TP: Selecting this option, a new window appears, where you can configure the following parameters (OSD 55):

- On "FTA Only" item, press [Left/Right] to select scanning of all channels or just scanning of free channels. If you select "Yes" it will scan free channels only.

- On "Scan Channel" item, press [Left/Right] to select the scanning range from TV + Radio Channels, only TV channels or only Radio channels.

- Search NIT: If you select this option as "Off", the receiver



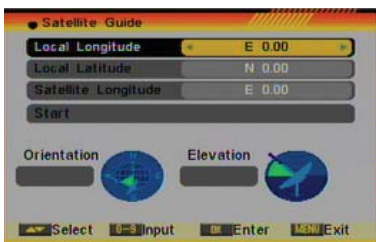
OSD 56



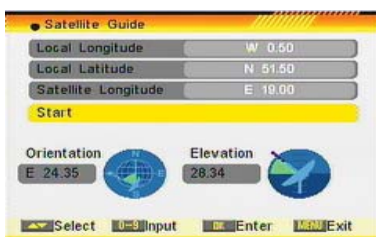
OSD 57



OSD 58



OSD 59



OSD 60

will search the selected TP. In case you select “On”, the NIT (Network Identification) will be identified and the receiver will automatically search all the TP of this network.

6. Press [OK] to start scanning.
7. On the “TP Scan” item, press [Exit] to cancel the scanning and saving the found channels.

4.4. SATELLITE LIST

When you enter the “Satellite List” menu you can see a window like the one beside (OSD 56):

1. Move through the satellite list using [] and mark/unmark the satellites that you want pressing [OK]
2. Press [Red] button to enter edit satellite menu (OSD 57). You can edit the satellite’s name and its longitude. Once you have edited the satellite, select “Save” option and confirm with [OK]. If you prefer to exit without saving the changes select “Exit” and press [OK].
3. Press [Green] button to open the “Add satellite” window. You can edit the satellite’s name and its longitude. Once you have edited the satellite, select “Save” option and confirm with [OK]. If you prefer to exit without saving the changes select “Exit” and press [OK].
4. After pressing [Yellow] button you will be asked “Are you sure to delete?” (OSD 58). Select “Yes” to delete the marked satellite. Select “No” to cancel the operation.

4.5. SATELLITE GUIDE

When you enter “Satellite Guide” menu, you will see the screen like beside (OSD 59).

Here you can enter your local longitude and latitude and the satellite’s longitude. The receiver calculates the antenna’s azimuth and elevation to point your antenna to the selected satellite.

1. Use the [Number] buttons to input the values of “Local Longitude”, “Local Latitude” and “Satellite Longitude”.
2. Press [] buttons to select east or west in “Local Longitude” and “Satellite Longitude” or to select north or south in “Local Latitude”.
3. Highlight the “Start” item and press [OK]. In the lower part of the window the corresponding values for the antenna setting are displayed (OSD 60).
4. Orientation means the angle between south and satellite.
5. Press [Exit] to leave this feature

5. SYSTEM SETUP

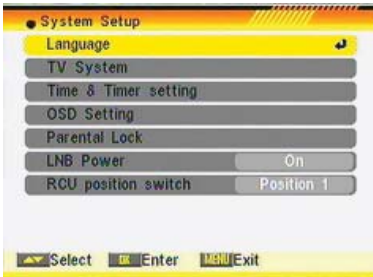
OSD 61

Press [Menu] in the TV mode to enter the main menu (OSD 61).

1. Press [] to select the System Setup item.
2. Press [OK] to enter the selected item.

In the System Setup menu (OSD 62):

3. Press [] to select the wanted menu item.
4. Press [OK] to enter the selected item among.
 - Language
 - TV System
 - Time & Timer Setting
 - OSD Setting
 - Parental Lock
 - LNB Power
 - RCU Position Switch



OSD 62

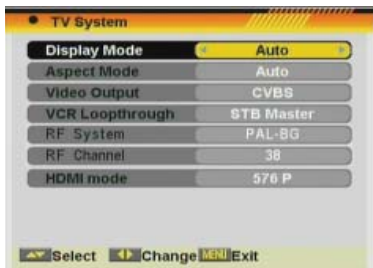
5.1. LANGUAGE

After selecting the “Language” menu you will see a window like beside (OSD 63):

1. Language: press [] to select languages. The selection of languages include: English, German, French, Spanish, Italian, Portuguese, Turkish, Polish, Russian, Danish, Greek, Hungarian, Arabic, Farsi.
2. First Audio: Some channels offer more than one audio language. This function allows you to set the preferred audio language for those channels using []. If a channel offers the same audio language as the “First Audio” you set the system will play this audio language as default. If the channel does not offer this audio language then the system will compare the offered languages with the second audio language. The selections of audio languages include: English, German, French, Spanish, Italian, Portuguese, Turkish, Polish, Russian, Danish, Greek, Hungarian, Arabic, Farsi.
3. Second Audio: If the channel has no audio language that corresponds with “First Audio” but with “Second Audio” the system will play the second audio language as default. If no audio language corresponds with the “Second Audio” then the default language of the current channel will be played instead. The selections of audio languages include: English, German, French, Spanish, Italian, Portuguese, Turkish, Polish, Russian, Danish, Greek, Hungarian, Arabic, Farsi.
4. Press [Exit] to return back from “Language” menu.



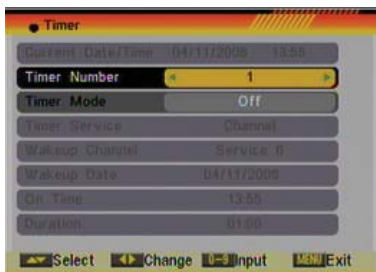
OSD 63



OSD 64



OSD 65



OSD 66

5.2. TV SYSTEM

When you enter the “TV System” menu you will see the screen like below (OSD 64):

1. Display Mode is used to switch the display mode. You can select from Auto / PAL / PAL-M / NTSC 3.58/NTSC 4.43. Press [] to select the desired mode.

2. Aspect Mode is used to switch the screen aspect ratio mode. You can select from Auto / 4:3 PS / 4:3 LB / 16:9. Press [] to select the needed mode.

3. Video Output is use for switching the screen aspect ratio mode. Now we provide below options: RGB / CVBS. You can press [] key to select each mode circularly.

4. VCR Loophrough: If there is a VCR connected to the receiver and, the receiver is connected to the TV, user can choose what prefer to watch on TV when both equipments are connected at the same time. If the selection is “VCR master”, the VCR will be showed even the receiver is on. If the selection is “STB master”, the receiver will be showed on the TV.

5. Standard Mod.: To choose the modulator output standard. Using [] you can chose between: PAL-BG / PAL-I / PAL-DK / NTSC.

6. RF Channel: This option allows you to determine the initial channel that the built-in modulator is supposed to occupy. This is important in the case that you wish to connect the receiver to an existing network.

The output range is from channel 21 to 69. Press [] to change the value.

7. In HDMI Mode, you can choose the number of lines and the scan mode of the video signal you are sending by the HDMI connector. Through the arrows [], select among: 576P / 480P / 576 I / 480 I. (P: Progressive, I: Interleaved)

Note: If you have the HDMI output connected and you select the progressive mode, the SCART output is automatically disabled.

8. Press [Exit] to close the “TV System” menu.

5.3. TIME & TIMER SETTING

When you enter “Time” “Local Time Setting” or “Sleep Timer” a menu with three items will be opened (OSD 65). Use [] to select between the three options and confirm with [OK].

5.3.1. TIMER

Select “Timer” item and press [OK] to enter the “Timer list” menu (OSD 66).

The current time will be displayed in the first column. If the current time is incorrect, please modify it with the [Number] buttons at the “Time” menu.

1. Timer Number: You can press [] to set the Timer number. There are totally 8 timers.



OSD 67

2. Timer Mode: Select how often the timer is running: Once, Daily, Weekly, Monthly and Yearly. Or switch the timer off.
3. Timer Service: You can choose between "DVR Recorder" / "Radio Recorder" (so you can program a recording of a TV or a Radio channel), "Reproduce Channel" / "Reproduce Radio" (that way, you will assign the alarm function to a concrete TV or Radio channel) or "Message mode" (creating a text message that will appear on the screen).
4. "DVR Recorder" / "Radio Recorder" option: If you select this option, the following fields of the image will be shown in order to be configured (OSD 67).

- Start channel: Press [OK] to open the channel list and select the channel you want to record. By default, when you enter this option, it shows the current tuned channel.
- Start date: Introduce using the numerical keys on the remote control the date on which you want to make the recording. By default, when you enter this option, it shows the current date.
- On time: Introduce BY using the numerical keys on the remote control; the time when you want to start recording. By default, when you enter this option, it shows the current time.
- Length: Settle the length of time you want the receiver to record a channel. Once it is finished, the receiver will be settled in Stand-By.

Note: If the date/ start time is prior to the current date/hour, a warning message will be shown and you have to change the date/start time.

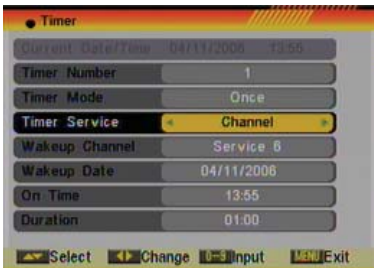
Note: If the hard disk is full and there is not enough space for a recording, a warning message will be shown on the screen.

Note: If during the recording, the hard disk fills up, the recording stops and will only store the data recorded until that moment (without losing the previously stored data).

If the TV is in TV mode, a recording timer will be activated and a message will be shown on the screen, asking for a confirmation of the recording or for the timer elimination. After some seconds, if it is not confirmed or deleted, the PVR will start the programmed recording.

5. "Channel reproduction" / "Radio reproduction" option: if you select this option, the following fields of the image will be shown in order to be configured (OSD 68).

- Start channel: Press [OK] to open the channel list and select the channel you want to watch.
- Start date: Introduce using the numerical keys on the remote control the date on which you want to activate the alarm service.
- On time: Introduce using the numerical keys on the remote control the time on which you want to activate the alarm service.
- Length: Settle the length of time you want the receiver to keep



OSD 68



OSD 69

one channel. Once it is finished, the receiver will be settled in StandBy. If you do not want the receiver to be settled on Stand-By, you have to configure the length to 00:00.

Note: If the date/ start time is prior to the current date/hour, a warning message will be shown and you have to change the date/start time.

6. Message option: If you select this option, the following image fields will be active in order that you can configure them (OSD 69).

- Start message: Use the keys [Left] [Right] to select the text you want to appear on the screen
- Start date: Introduce using the numerical keys on the remote control the date on which you want to activate the service.
- On time: Introduce using the numerical keys on the remote control the time on which you want to activate the service. Automatically, a message will be shown although the receiver is ON or in Standby.

Note: If the date/ start time is prior to the current date/hour, a warning message will be shown and you have to change the date/start time.

7. Press [Exit] to leave the "Timer" menu.

Note: If the receiver is in stand-by, and Low Power Consumption mode is active, the receiver will switch on 1 minute before the programmed event.



OSD 70

5.3.2. LOCAL TIME SETTING

When you select "Local Time Setting" and press [OK] then you will see a window like the one beside (OSD 70):

1. GMT Usage: This item is used to set the time by using the time signal from the satellite. Press [Left] [Right] to change the setting.

2. The "GMT Offset" item is only available when "GMT Usage" is set to "On". Press [Left] [Right] to set the "GMT Offset" value. With every time you press the button the time offset will be increased / decreased by half an hour.

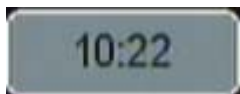
3. Summer: this option is only available when "USE GMT" is enabled. Use [Left] [Right] to switch on/off the summer timetable.

4. "Date" and "Time" items are only available when the "GMT Usage" is set to "Off". Press [Left] [Right] to select one item and use number buttons to input time and date directly.

NOTE: If the current channel provides the correct time information, you will see the current time after you entered "Time" menu. If the channel doesn't provide time information, you have to input the date and time information manually. The most channels support the time signal.

5. Show time: Use [Left] [Right] to switch on/off this option. When the option is enabled, the time will be displayed at the TV in a frame in the top right margin.(OSD 71)

6. Press [Exit] to exit the menu.



OSD 71



OSD 72

5.3.3. SLEEP TIMER

Press [OK] button in this option to set the sleep timer. You will see "SLEEP TIME OFF / SLEEP TIME 10 / SLEEP TIME 30 / SLEEP TIME 60 / SLEEP TIME 90 / SLEEP TIME 120". (OSD 72)

If you set a sleep time, the system will change to Standby mode after the chosen time period.

5.4. OSD SETTING

When you select "OSD Setting" you will see a screen like beside (OSD 73):

1. Subtitle Display: Press [Left] [Right] to select "On" or "Off". If the current channel has subtitle information, it will be displayed if this function is "On". If this function is "Off" subtitles won't be displayed.
2. OSD Timeout: This setting determines the duration the info window is displayed on the screen when you change channels. Press [Left] [Right] to set the time between 1 to 10 seconds.
3. Position: To define the position of the information's bar (top/bottom).
4. OSD Transparency: With this parameter you can set the transparency of the menus. Press [Left] [Right] select the value between 10%, 20%, 30%, and 40% and "NO" (means no transparency function).
5. Load OSD Setting Default: If you want to reset your OSD settings to the default settings then select this item and press [OK].
6. Press [Exit] button to leave the "OSD Setting" menu.



OSD 73

5.5. PARENTAL LOCK

You can set a password for anyone who wishes to operate the "Installation" menu. You can also set the password to lock channels. Below you find how to set and change the password.

1. On "Parental Lock", press [OK] to open a dialogue box and input the password. After you entered the correct password, you will see a screen like beside (OSD 74):
2. Menu Lock: If Menu Lock is set to "Yes" then you need to enter the password every time you want to open then menu. If it is set to "No" then you can open the menu without entering the password first.
3. Channel Lock: If set to "Yes" then you need to enter the password before you can see those channels which have been marked as locked channels in the Channel menu. If it is set to "No" then even those channels can be selected without entering the password first.
4. New Password: Here you can change the existing password. You should do this after you set up the receiver the first time



OSD 74



OSD 75

and every time when you think that your password is known by unauthorized persons. To change the password, enter the new password in the “New Password” item and repeat the same one in the “Confirm Password” item. If the passwords are not identically then you will see a warning message. If you entered the same new password in both fields then you will see the message “Saving Data, Please Wait...”. From now on you need to use the new password to open locked menus or locked channels.

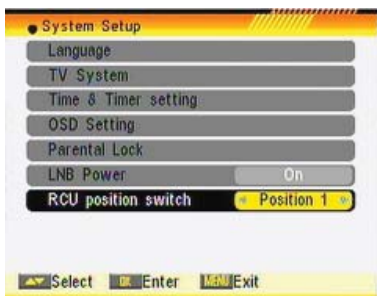
NOTE: The default password is 0000

5. Press [Exit] to leave the “Parental Lock” menu.

5.6. LNB POWER

Here you can set the power output to the LNB (OSD 75). If your receiver is connected to the LNB directly then you need to set the LNB Power to “On”. If your receiver is connected to a multi switch (SMATV signal distribution system) then it may be that you don’t need to provide the power to the LNB. But since this is depending on the kind of installed distribution system we recommend you to contact your installer or to refer to the user manual of this system to get the correct information.

You also just can change this setting and check if you still can receive the channels. If the LNB Power is off and you still can see all channels then we recommend this setting.



OSD 76

5.7. RCU POSITION SWITCH

In order to avoid interferences between remote controls, you have the possibility to change the code of it, to do that you have to change the position of a switch in the remote control.

But first of all you have to change this code in the receiver. You can do this in the menu “RCU Position” (OSD 76).

You have to select the same position in the receiver than in the remote control (OSD 77).

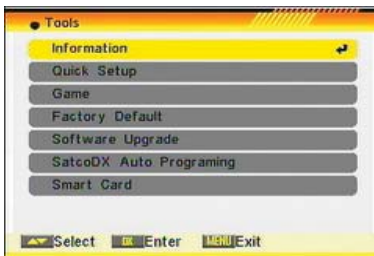


OSD 77

6. TOOLS



OSD 78



OSD 79



OSD 80



OSD 81

Press [Menu] in the TV mode to enter the main menu (OSD 78).

1. Press [] to select the Tools item.
 2. Press [OK] to enter the selected item.
- In the Tools menu (OSD 79):
3. Press [] to select the wanted menu item.
 4. Press [OK] to enter the selected item among.

- Information
- Quick Setup
- Game
- Factory Default
- Software Upgrade
- SatcoDX Auto Programming
- Smartcard

6.1. INFORMATION

1. When you select the “Information” menu you will see a screen like beside (OSD 80). The screen displays data about the current channel. This function is the same as the function [Info] in the full screen TV mode.
2. Press [Exit] button to leave the information display.

6.2. QUICK SETUP

The receiver includes an installation assistant that will help you to setup the different parameters as you can see at OSD 81.

1. Language: press [] to select the language that will appear on the menus (see point 5.1.)
2. First Audio: Some channels offer more than one audio language. This function allows you to set the preferred audio language for those channels using []. (See point 5.1.)
3. Second Audio: Some channels offer more than one audio language. This function allows you to set the second audio language for those channels using []. (See point 5.1.)
4. LNB Power: If your receiver is connected to the LNB directly then you need to set the LNB Power to “On”. If your receiver is connected to a multi switch (SMATV signal distribution system) then it may be that you don’t need to provide the power to the LNB. (See point 5.6.)
5. Single Search: Selecting this option and pressing [OK], you will access to the Antenna Setup menu (see point 4.1.).
6. Multi search: Selecting this option and pressing [OK], you will access to “Multi search” menu (see point 4.3.).



OSD 82

6.3. GAME

When you enter “Game” menu, you will see three Games include Tetris, Snake and Othello (OSD 82).

6.3.1. TETRIS

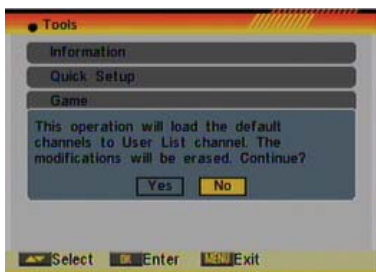
1. Mark “Setup” and press [← →] to select the level (speed).
2. Mark “Start” and press [OK] to start the game.
3. Mark “Cancel” and press [OK] to leave the game.
4. Play the game:
 - Press [← →] to move the block left or right
 - Press [↻] to rotate the block clockwise
 - Press [⚡] to drop the block faster
 - Press [OK] to Pause/Play the game
 - Press [Exit] to leave the game and return to the Game menu.

6.3.2. SNAKE

1. Mark “Setup” and press [← →] to select the level (speed).
2. Mark “Start” and press [OK] to start the game.
3. Mark “Cancel” and press [OK] to leave the game.
4. Play the game:
 - Press [← → ↻] to guide the snake to the red blocks.
Every block you ate increases the length of the snake. If the snake runs against a wall or against itself then it dies.
 - Press [OK] to Pause/Play the game
 - Press [Exit] to quit the game and return to the Game menu.

6.3.3. OTHELLO

1. Mark “Setup” and press [← →] to select the game level (degree of difficulty).
2. Mark “Start” and press [OK] to start the game.
3. Mark “Cancel” and press [OK] to leave the game.
4. Play the game:
 - Press [← → ↻] to position the round mark.
 - Press [OK] to set your stone.
 - Press [Exit] to quit the game and return to the Game menu.



OSD 83

6.4. FACTORY DEFAULT

When you press [OK] on the “Default Value” item:

1. A dialogue box will occur where you need to enter the password.
2. After you input the correct password a warning message will be displayed like the one beside (OSD 83).
3. If you select “Yes” then all changes you made will be reset to default values. Make sure you really want to do this!
4. Press [Exit] in both steps will close the window without resetting the receiver.



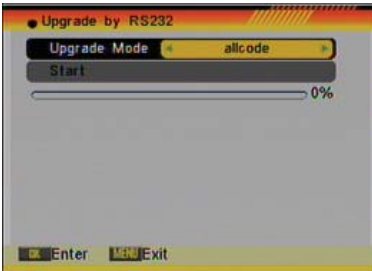
OSD 84

6.5. SOFTWARE UPGRADE

There are two ways of upgrading the software of the receiver as you can see at OSD 84.

6.5.1. RS232 UPGRADE

1. This function allows you to upgrade the software of the receiver. This can be done from PC to receiver or from a master receiver to a slave receiver.
 2. Connect master receiver or PC to the slave receiver via serial interface (O-Modem cable). Enter the "Software Upgrade" menu of the master receiver and press [↔] to change the upgrade mode. Upgrade modes include: allcode / maincode / radioback / defaultdb / userdb (OSD 85).
 3. Switch on the slave receiver.
 4. Mark "Start" on the master receiver and press [OK] to start upgrade. Wait until the display on the front panel shows "END". Then switch off the receiver and on again. Now the new software is used.
 7. Press [Exit] to save the setting without upgrade.
- For more information about software upgrade, please visit <http://www.universbyfte.com>



OSD 85

6.5.2. UPGRADE BY SATELLITE

This function can upgrade the software of your receiver through data sent by a satellite. At the moment we offer satellite updates only through ASTRA1 satellite.

1. Select the satellite and TP or input the TP value and download PID.
2. Then mark "Start" and press [Enter] to begin the download of the upgrade (OSD 86). This may need up to 60 Minutes. Therefore we suggest using of this function only if you don't intent to watch TV during this time.

At the moment of writing this manual, the data for the software upgrade by Satellite is:

- Satellite: Astra
- TP Frequency: 12604 MHz.
- Symbol Rate: 22000
- Polarity: Horizontal
- Download PID: 1277

For changes in the data of the satellite please visit <http://www.universbyfte.com>



OSD 86



OSD 87

6.5.3. UPGRADING THOUGH USB

This option allows updating the software of the receiver with the received data from a USB 2.0 memory device. To do it, connect a USB 2.0 memory device to the receiver and accede to this menu option (OSD 87).

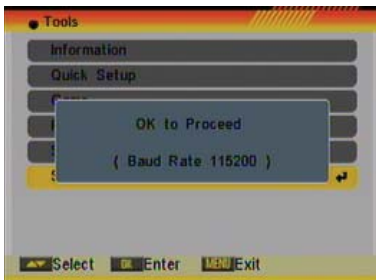


OSD 88

The last software version to be loaded must be placed at the root path of your USB device.

1. Upgrade mode: Select with [←→], the mode of upgrading.
2. Update file: Select with [←→], the name of the file to be loaded.
3. Select "Start" and press [OK]. An alert message appears indicating not to take out the memory device during the loading process.
4. Once the file has been loaded, it requires the conformity to end the upgrading process, writing into the receiver the upgrading. Press [OK] to upgrade the receiver (OSD 88). In case during the reading of the file, it is corrupted or it would be a not appropriated for this model of receiver, an alert message would appear "Error reading the USB disk".
5. After pressing [OK] the receiver will write into the Flash memory, and it will reboot to end the upgrading process.

For further information about the upgrading of the receivers, please visit <http://www.universbyfte.com>, in the chapter about upgrading receivers.



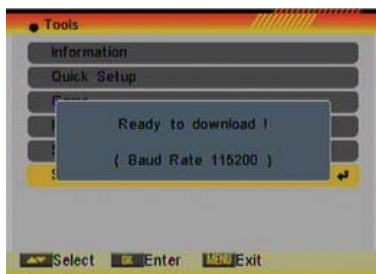
OSD 89

6.6. SATCODX AUTO PROGRAMMING

This function is using the tables of the SatcoDX websites to update your channel and satellite lists.

1. Start the SatcoDX application on your PC.
2. Select "SatcoDX Auto Programming" item from the "Tools" menu and press [OK]. The screen will show the message "OK to Proceed" (OSD 89).
3. Press [OK] again and you will see the message "Ready to Download" (OSD 90).
4. In the PC application set the Baud Rate to 115200 and start the download procedure.

! Caution: The new download channels will delete the original channels list. Please be careful before using it.



OSD 90

6.7. SMARTCARD

In this option, you can find information about the conditional access system. If there is no card or it is placed incorrectly, information about "No card" or "Unknown" will be showed on the screen.

With a FELEC-CAS card, information about the card will be showed (OSD 91).

Note: Card must be inserted with chip at the bottom side.



OSD 91

7. MEDIA MANAGEMENT

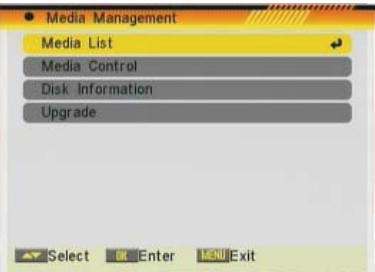


OSD 96

Press the key [Menu] on the remote control to go to the main menu (OSD 96).

1. Press the arrows on the remote control [← →] to settle the option of DVR management.
2. Press [Ok] to enter the submenu DVR Management
3. In the submenu DVR management (OSD 97):
3. Press the keys on the remote control [← →] to move to the different options on the menu.
4. Press [Ok] to go to the selected option on the submenu.

- Media List
- Media Control
- Disk Information
- Upgrade



OSD 97

7.1. MEDIA LIST

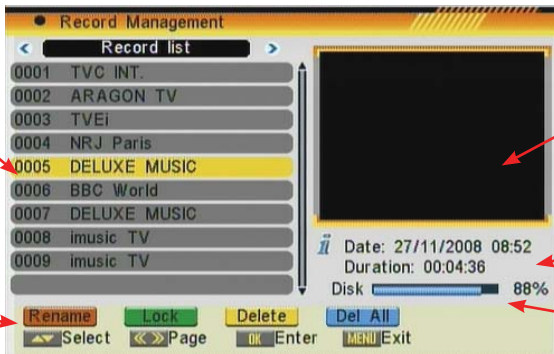
This menu option has the lists of recordings as well as the music, pictures and video files that the HDD contains. You can manage the contents and to access to the multimedia player.

In the first screen you will have to select the HDD partition where multimedia files are.

Press the cursors button of the remote control to select the desired item and then press OK to proceed. Now you will be able to select different multimedia contents lists.

Press [← →] to move along the different options.

- Manage the recordings (Record List)
- Multimedia Player (MP3 List, Picture List, Video List, List of all files).



OSD 98

Recorded files

Preview window of the selected file

Information about the selected file.

Options

Information about the capacity of the hard disk

English



OSD 99

7.1.1. RECORD MANAGEMENT - RECORD LIST

With this option of the menu, you can reproduce, rename, block and delete recordings.

You can go to this option using the menu or directly pressing the key [PVR] on the remote control.

Information on the window (OSD 98):

7.1.1.1. HOW TO REPRODUCE A RECORDING

If you want to reproduce a recording, you only have to select it and press the key [OK]. In the meanwhile, you can watch the recorded file on the preview window.

7.1.1.2. HOW TO RENAME A RECORDING

Press the key [Red] to rename a recording.

- A window will appear where you can change the name of the record (OSD 99). Press OK to go out and modify the name.
- Once the name is changed, it won't be saved until you leave the "Recording Management".
- Press the [Exit] key to leave. A window will ask for confirmation to save the changes.

7.1.1.3. HOW TO BLOCK A RECORDING

With this function it is possible to block a recording so it is necessary to introduce a password to watch it.

- If you want to block a recording, select it and press the [Green] key
- The blocked channel is marked with an icon (OSD 100).
- In order that the blockade of channels work, it is necessary that the blocking option is activated in the menu of "Blockade with password" (chapter 5.5).
- Press the key [Exit] to leave. A window will ask for confirmation of saving the changes.

7.1.1.4. HOW TO DELETE A RECORDING

To delete one or more recordings, press the [Yellow] key on the recording you want to delete (if you want to delete several recordings, select them one by one).

- A window appears and asks for the password to delete a recording. If it has not been modified, it is by default the code "0000".
- A mark will appear on the name of the channel (OSD 101).
- The marked recordings will be deleted once you confirmed that you want to save the changes by leaving the menu.



OSD 100



OSD 101



OSD 102

7.1.1.5. HOW TO DELETE ALL THE RECORDINGS

To delete all of the recordings, press the [Blue] key.

- A window appears and asks for the password to delete all the recordings. If it has not been modified, it is by default the code "0000".
- A mark will appear on the names of the channels (OSD 102).
- The marked recordings will be deleted once you confirmed that you want to save the changes by leaving the menu.

7.1.2. MULTIMEDIA PLAYER

In this menu option you can accede and manage the contents of the HDD previously copied from your computer.

You also can create playlists of music, pictures or video. Press [Left/Right] to shift along the different lists. Press [Menu] button to Exit.



OSD 103

- CONTENT LISTS OF THE HARD DISK

These lists contain all the files of the HDD that you have copied previously from your computer.

The content is shown organized in the same folders you have created, and it can be shown in different manners in the following lists:

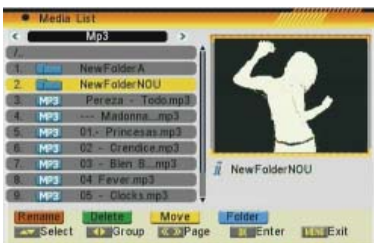
- All the files (ALL)
- MP3 Files
- Pictures (JPG)
- Video (MPG)

- PLAYLISTS

These lists are created adding the files you want to the previous lists. You can create 3 lists:

- Picture List
- Music List
- Video List

Press [OK] on any file from one list to play all the files contained.



OSD 104

The functions are similar in all the lists.

Press the keys [Left/Right] to move along the files and press [OK] to enter and exit of the folders or open a file or playlist. (OSD 103)



OSD 105

7.1.2.1. EDIT FILES AND FOLDERS

It allows you to manage the file or folder.

- Select the file or folder and press the [Red] button.
- New functions will appear: (OSD 104)

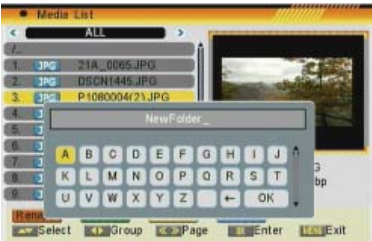
English



OSD 106

- RENAME

1. Press the [Red] button to rename the file.
2. A new window appears where you can change the name of the recording moving through cursors. Press OK to exit and modify the name.
3. Once the change is done, it will be not modified until you do not exit from the list.
4. Press the [Menu] button to exit. A new window will request information to save the changes.



OSD 107

-DELETE

1. Press the [Green] button to delete the file.
2. A new window appears where you can select between deleting the selected file [Red] or all the files with the same format [Green] (OSD 105).
3. The deletion mark will appear after the name of the file.
4. The selected recording will be deleted once you confirm to save the changes when you exit the menu.

-MOVE

1. Press the [Yellow] button to move the file.
2. A mark appears behind the file you want to move (OSD 106).
3. Go to the folder you want to move and press again the [Yellow] button. A message will appear on the screen requesting for confirmation.



OSD 108

-CREATE A NEW FOLDER

1. Get into the folder where you want to create a new one, and press the [Blue] button.
2. A new window appears where you can name the new folder moving through the arrows and pressing [OK] (OSD 107).

7.1.2.2. ADDING A NEW FILE TO THE LIST

1. Go over the file you want to add to your customized playlist and press the [Green] button.
2. A new window appears where you can select between adding the selected file to the list [Red] or all the files of the same format [Green] (OSD 108).
3. A new mark will appear after the name of the file (OSD 109).



OSD 109



OSD 110

7.1.2.3. SEARCH FOR FILE

1. Press the [Blue] button to open the “Search” window. Use the buttons [Left] and [Right] to write the characters of the file name. Press [OK] to confirm the characters. (OSD 110)
2. After writing down the characters, select OK and press [OK] on the remote control.

7.1.2.4. LOGO

*Only available for the picture list of the Hard Disk. Press the [Yellow] button over the picture you want it to appear as background when you are listening to the radio or the Audio playlist.

To restore the Univers logo background, delete the picture of the Hard Disk or disconnect it from the Receiver.



OSD 111

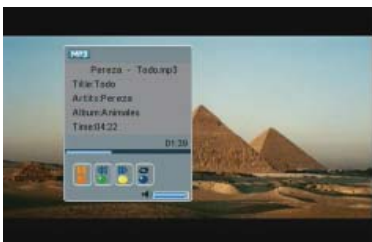
7.1.2.5. CONFIGURE THE SLIDE SHOW

*Only available for the picture playlist. This function allows you to configure the “slide show”, therefore, to play the picture playlist.

1. Press the [Yellow] button. (Config)
2. A new window will appear where you should configure some parameters (OSD 111):
 - Size of the pictures on the screen.
 - Time of viewing each picture on the screen.
 - Repeat: When the playlist finishes, it starts again.
 - Effect: Transition effects between picture and picture.
 - All Mp: Switch On or Off the background music. If it is configured as “On”, the music of the MP3 playlist will be played.

7.1.2.6. AUDIO .MP3 PLAYER

1. Press [OK] over the .MP3 file or list of .MP3 files you want to play.
2. A Player will be opened as it is shown in the picture (OSD 112).





OSD 112

- [Red]: Pause / Play
- [Green]: Fast Rewind
- [Yellow]: Fast Forward
- [Blue]: Play Mode, only in case of playing the list with various files.
- [Left/Right]: Volume control.



OSD 113

7.1.2.7. PICTURE .JPG VIEWER

1. Press [OK] over the file .JPG that you want to show.
 2. The selected picture will be shown on the screen.
- If the file is included into the Picture Playlist, they all will be shown in "slide show" mode.
You can rotate the picture with the buttons [ ]. (OSD 113)



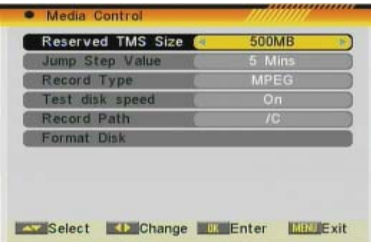
OSD 114

7.1.2.8. VIDEO .MPG PLAYER

1. Press the button [OK] over a .MPG video or a list of .MPG videos.
2. The file will be played on the screen. In case that you play a playlist, it will play all the files one by one. (OSD 114)

7.2.- HDD CONTROL

In this menu you can find the options "Reserved TMS Size", "Jump Step Value", "Record Type", "Test Disk Speed", "Record Path" and "Format HDD" (OSD 115).





OSD 115

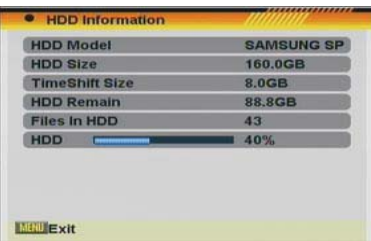
7.2.1. TMS RESERVED SIZE

Reserved Size for the storage of the Time Shifting.
The available options can vary depending on the capacity of the external Hard Disk.

7.2.2. JUMP STEP VALUE

With this option you can settle the jump marks forward and reward.
On a current reproduction, press the keys [] or [] to make a jump of a certain period of time on the reproduction.
This period is configurable and the jumps can be: 1, 3, 5, 10 and 15 minutes.

If they are configured every 10 minutes, each time that you press this key, it will jump automatically 10 minutes forward/reward on the reproduction.



OSD 116

7.2.3. RECORD TYPE

In this option, you can configure the video format of the recordings. Options: MPEG, Original TS (Transport Stream).

7.2.4. TEST DISK SPEED

If you select "On" in this option, the receiver will check out the speed when every recording is started.



OSD 116

7.2.5. RECORD PATH

In this option you will have to select the HDD partition where will be saved your recordings.

7.2.6. FORMAT DISK

This option will format the hard disk, erasing it completely. When you select this option, a window appears and asks for a password to format the hard disk. If it has not been modified, it is by default the code "0000".

Once this code is given, the hard disk will be formatted and you will lose all the saved recordings.

Note: This process is irreversible. Once you have selected this option and you have given the password, the data will be lost.



OSD 117

7.3.- HDD INFORMATION

In the HDD information submenu you can see the capacity of the hard disk. You also see the free space available (OSD 116).

7.4. UPGRADING THROUGH USB

This option allows updating the software of the receiver with the received data from a USB 2.0 memory device. To do it, connect a USB 2.0 memory device to the receiver and accede to this menu option (OSD 116).

The last software version to be loaded must be placed at the root path of your USB device.

1. Upgrade mode: Select with [←→], the mode of upgrading.
2. Update file: Select with [←→], the name of the file to be loaded.
3. Select "Start" and press [OK]. An alert message appears indicating not to take out the memory device during the loading process.
4. Once the file has been loaded, it requires the conformity to end the upgrading process, writing into the receiver the upgrading. Press [OK] to upgrade the receiver (OSD 117). In case during the reading of the file, it is corrupted or it would be a not appropriated for this model of receiver, an alert message would appear "Error reading the USB disk".
5. After pressing [OK] the receiver will write into the Flash memory, and it will reboot to end the upgrading process.

For further information about the upgrading of the receivers, please visit <http://www.universbyfte.com>, in the chapter about upgrading receivers.

8. TECHNICAL SPECIFICATION

VIDEO	
Decoding	MPEG-2 & MEPG-1 compatible
Bit rate	Max 15Mbps
Output	PAL/NTSC
Aspect ratio	4:3, 16:9, Auto
Active pixel	720x480 @ 30fps; 720x576 @25fps
Output connector	Scart / RCA / HDMI
AUDIO	
Decoding	MPEG-2/MPEG-1 layer I & II
Mode	Mono, Dual, Stereo, Joint stereo
Bit rate	Max 384Kbps
Output connector	Scart / RCA / SPDIF /HDMI
DEMODULATOR	
Demodulation	QPSK
Symbol rate	SCPC/MCPC
Outer code	RS (204, 188, 8)
Inner code	ALL DVB rates
Energy dispersion	DVB-S recommendation
INPUT SIGNAL	
Frequency	950MHz ~ 2150MHz
Input level	-65dBm ~ -25dBm
Channel bandwidth	36MHz
Input socked	F-type connector
RF MODULATOR	
Input	IEC 169-24 Male x 1
Output	IEC 169-24 Female x 1
Band	UHF
TV Standard	PAL BG/I/DK, NTSC M
Output Channel	21~69(PAL), 14~83(NTSC)
LNB CONTROL	
Power supply	13/18V (500mA max) with
Polarized control	short circuit protection
DiSEqC control	13/18V polarization (vertical/horizontal) DiSEqC1.0 DiSEqC1.1 and DiSEqC 1.2
MISCELLANEOUS	
Supply voltage	100~240VAC/50~60Hz
Power consumption	Typ. 21 watts / Max. 25 watts
Operation temperature	+5° to +40°
Storage temperature	-20° to +70°
Dimension (W x D x H)	240x190x45 mm
Weight	1.1Kg
SmartCard	FELEC-CAS



“WE , UNIVERS BY FTE, DECLARE

THAT THE PRODUCTS

U4123E

IS IN CONFORMITY WITH FOLLOWING DIRECTIVES

LOW VOLTAGE DIRECTIVE 2006/95/EC

EMC DIRECTIVE 2004/108/EC”

English